

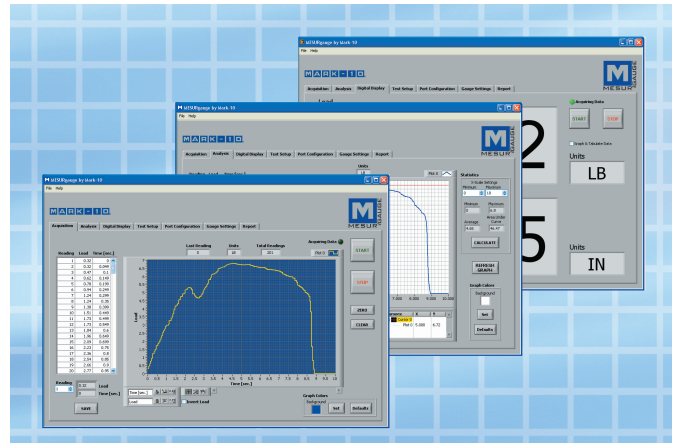
## Measure ■ Graph ■ Analyze ■ Store



MESUR™gauge is a measuring and analysis program designed to expand the functionality of force and torque measuring instruments. MESUR™gauge captures readings from any force or torque gauge with USB or RS-232 output and displays data in tabular and graphical formats. Load data can be graphed versus time or distance.

The program includes a set of tools to analyze test results, including statistical calculations, quick data export to Microsoft Excel, customizable reports, pass/fail indicators, and many others. Test setups and sequences are customizable and can be saved and recalled. The user can program test start and stop conditions, including load, time, distance, and sample break.

Additional features in MESUR™gauge include a large display screen for real time load and travel data and a utility to configure Mark-10 gauges from a PC. Built-in simulated data generation allows MESUR™gauge to be evaluated without a gauge.

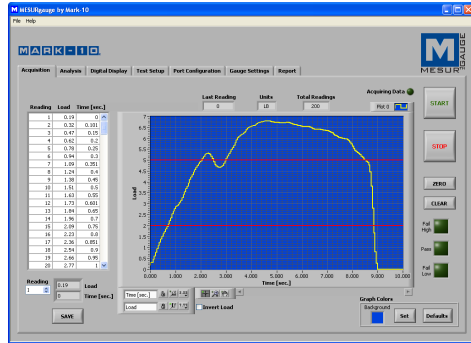


## Features

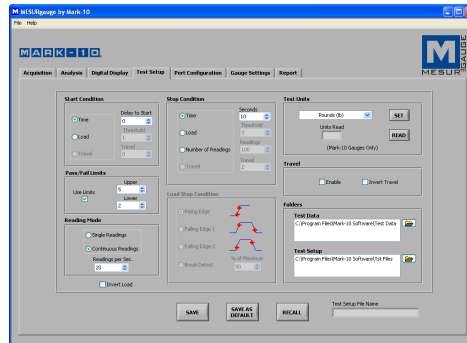
- Inputs data from a force or torque gauge and travel display to a PC for further analysis, at up to 50 Hz\*
- Real time tabular and graphical data displaying load vs. time or load vs. distance
- Configurable start and stop test triggers (time, load, number of samples, or distance)
- Statistical calculations (minimum, maximum, average, area under curve)
- Graph manipulation tools, including zooming, scaling, panning, titles, and more
- One-button export to Excel
- Create customizable reports and report templates
- Save and recall test setups and test data
- Configure Mark-10 instruments easily through a simple interface
- View real time data on a large simulated instrument display

\* Maximum data input rate depends on the equipment used, as follows:

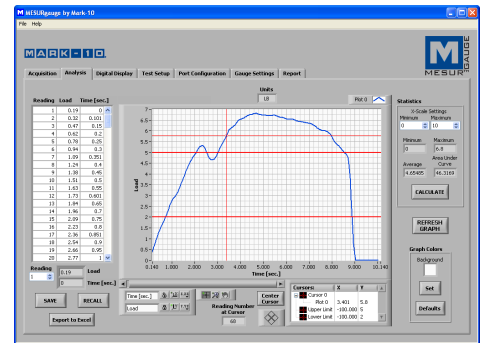
- USB output from instrument: 20 Hz
- RS-232 output from instrument: 50 Hz
- USB output from ESM301(L) or TSTM(H)-DC stands: 20 Hz
- RS-232 output from ESM301(L) or TSTM(H)-DC stands: 50 Hz
- USB or RS-232 output from instrument or DC controller, with Mitutoyo travel display: 2 Hz



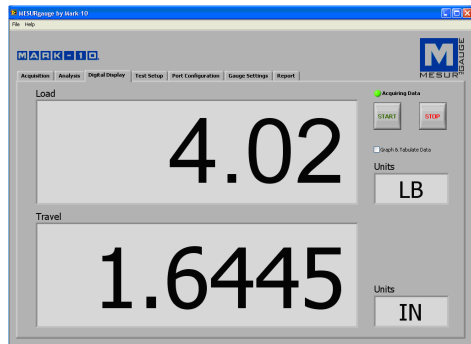
View real time data in graphical and tabular formats



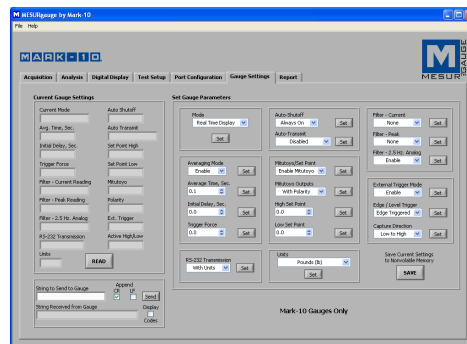
Configure test start and stop conditions



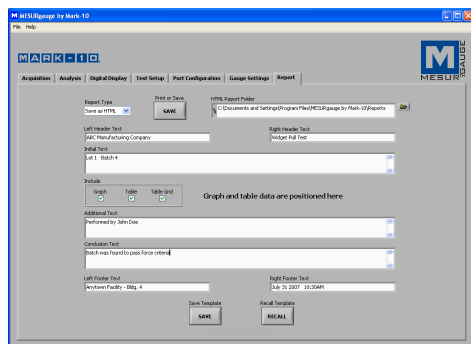
Sophisticated analysis tools include an x-y cursor, statistics, and more



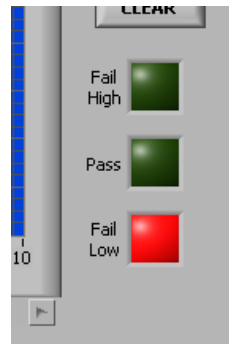
View real time load and travel readings on an enlarged simulated instrument display



Mark-10 gauge settings can be configured through a simple interface



Easily customize reports and report templates



High and low limit indicators help differentiate between an acceptable sample and a reject

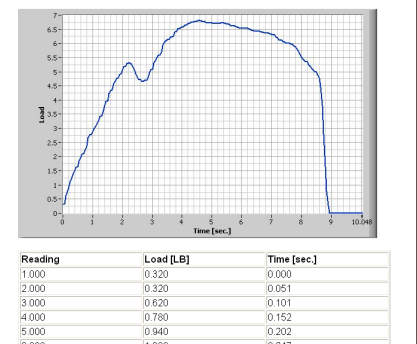
**Left Header Text - Test Report Example**      **Wednesday, August 08, 2007 5:07:27 PM**

Initial Text - Include any initial text or comments here.

**LOAD UNITS: LB**

**X-Scale Settings (Time [sec.])**  
 Minimum: 0.000  
 Maximum: 10.048

**Statistics**  
 Maximum: 6.80  
 Minimum: 0.00  
 Average: 4.62  
 Area Under Curve: 46.44



Reports can be saved to an HTML file or sent directly to a printer

## Ordering Information

Part No.	Description
15-1004	MESUR™gauge software

## Computer Requirements

- Windows 2000 or later operating system
- At least 150 MB of free hard disk space
- Minimum display resolution of 1024 x 768